

Social workers' intervention in PTSD and community psychiatric services

"The European Commission support for the production of this publication does not constitute an endorsement of the contents which reflects the views only of the authors, and the Commission cannot be held responsible for any use which may be made of the information contained therein."



Co-funded by the
Erasmus+ Programme
of the European Union

Main activities

Psychiatric social work began in the early twentieth century, as a result of a movement for community care of the mentally ill.

Social workers in psychiatric hospitals must obtain information about their patients' psycho-social history, past health care providers and perform in-depth assessments. They will also collaborate with courts, community partners, family agencies, private psychiatrists and local departments of health or human services.



"The European Commission support for the production of this publication does not constitute an endorsement of the contents which reflects the views only of the authors, and the Commission cannot be held responsible for any use which may be made of the information contained therein."

Main activities



Co-funded by the
Erasmus+ Programme
of the European Union

- Acts within the limits of his professional competence and in accordance with the doctor's instructions, respecting the therapeutic plan;
- Offers services for outpatients which are included into a mobile team;
- Actively participates in the work meetings of the mobile team.



"The European Commission support for the production of this publication does not constitute an endorsement of the contents which reflects the views only of the authors, and the Commission cannot be held responsible for any use which may be made of the information contained therein."



Main activities



Co-funded by the
Erasmus+ Programme
of the European Union

- Participates in the elaboration of the directed discharge plan, in the assistance plan and in their revision, together with other members of the multidisciplinary team.
- Mediates relationships between patients, family, doctors, court, to help people with mental disorders who face problems such as disabilities, abuse or poverty.
- Advises and helps family members to understand and support the patient or services such as employment, counseling and financial assistance, medical treatment.



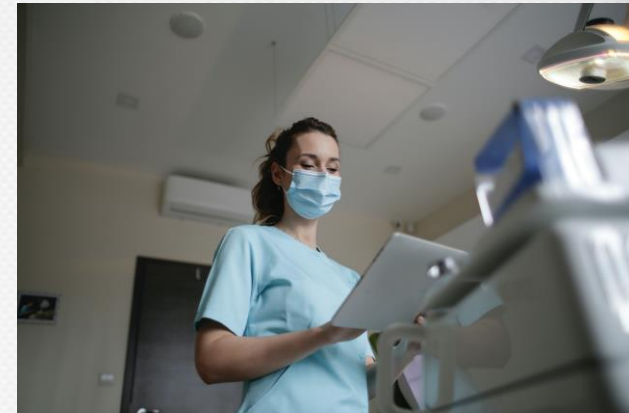
"The European Commission support for the production of this publication does not constitute an endorsement of the contents which reflects the views only of the authors, and the Commission cannot be held responsible for any use which may be made of the information contained therein."

Main activities



Co-funded by the
Erasmus+ Programme
of the European Union

- Orients beneficiaries and their families towards community resources related to support groups;
- Respects the code of ethics and professional deontology;
- Assists family or the relatives of the assisted person in adopting the appropriate measures for the problem in question, intervening in resolving the conflicts between the beneficiary and the family or the informal network.



"The European Commission support for the production of this publication does not constitute an endorsement of the contents which reflects the views only of the authors, and the Commission cannot be held responsible for any use which may be made of the information contained therein."



The methodology for providing services

People with severe mental disorders in our psychiatric hospital benefit from mobile medical-psycho-social assistance services.

a) Notification of the case

The beneficiary is notified by the attending specialist doctor, from the hospital, to the mobile team, with the recommendation of mobile medical-psycho-social assistance. The beneficiary is registered and an evaluation officer is appointed.



"The European Commission support for the production of this publication does not constitute an endorsement of the contents which reflects the views only of the authors, and the Commission cannot be held responsible for any use which may be made of the information contained therein."



The methodology for providing services

b) Information

The beneficiary is informed about the support services and work procedures of the mobile team, by the doctor or by one of the member of the professionals team. The information is addressed to the beneficiary and / or his family members.

c) The request of the potential beneficiary and the signing of the informed consent

The Beneficiary signs an informed consent expressing his agreement to actively participate in the multidisciplinary evaluation process and authorizes the multidisciplinary team to carry out the necessary investigations and diagnostic procedures with respect for personal rights.



"The European Commission support for the production of this publication does not constitute an endorsement of the contents which reflects the views only of the authors, and the Commission cannot be held responsible for any use which may be made of the information contained therein."



The methodology for providing services

d) Multidisciplinary evaluation

The multidisciplinary evaluation includes:

- Medical evaluation, performed by the attending physician, based on the medical evaluation form.
- Psychological evaluation, performed by the psychologist of the mobile team and completed by writing the psychological report.
- Social evaluation, performed by the social worker of the mobile team and completed by drafting the social survey



"The European Commission support for the production of this publication does not constitute an endorsement of the contents which reflects the views only of the authors, and the Commission cannot be held responsible for any use which may be made of the information contained therein."



Services offered by the social worker

These assessments focus on capturing the individual problems and needs of the beneficiary and are completed with useful recommendations for home care:

Development of independent living skills

- maintaining personal hygiene
- household activities and home care
- adequate nutrition
- shopping and revenue management
- use of means of transport



"The European Commission support for the production of this publication does not constitute an endorsement of the contents which reflects the views only of the author, and the Commission cannot be held responsible for any use which may be made of the information contained therein."



Services offered by the social worker

Recreational services and structuring of leisure activities:

- meetings for recreational purposes
- participation in social events

Health promotion

- preventive health education interventions
- early detection of medical problems
- planning medical examinations



"The European Commission support for the production of this publication does not constitute an endorsement of the contents which reflects the views only of the authors, and the Commission cannot be held responsible for any use which may be made of the information contained therein."